



More than just making a grade...
Making a difference



Western University • Canada

School of Social Work

For more information, please contact:

BSW Program
King's School of Social Work
266 Epworth Avenue
London, Ontario N6A 2M3 Canada
1.800.265.4406 or 519.433.3491 ext. 4445

Email: BSWProgram@kings.uwo.ca



kings.uwo.ca

We welcome applications from all qualified individuals. Our diversity has many different faces and expressions including, but not limited to: age, colour, culture, disability/non-disability status, ethnic or linguistic origin, gender, health status, heritage, immigration status, geographic origin, race, religious and spiritual beliefs, political orientation, gender and sexual identities, and socioeconomic status.

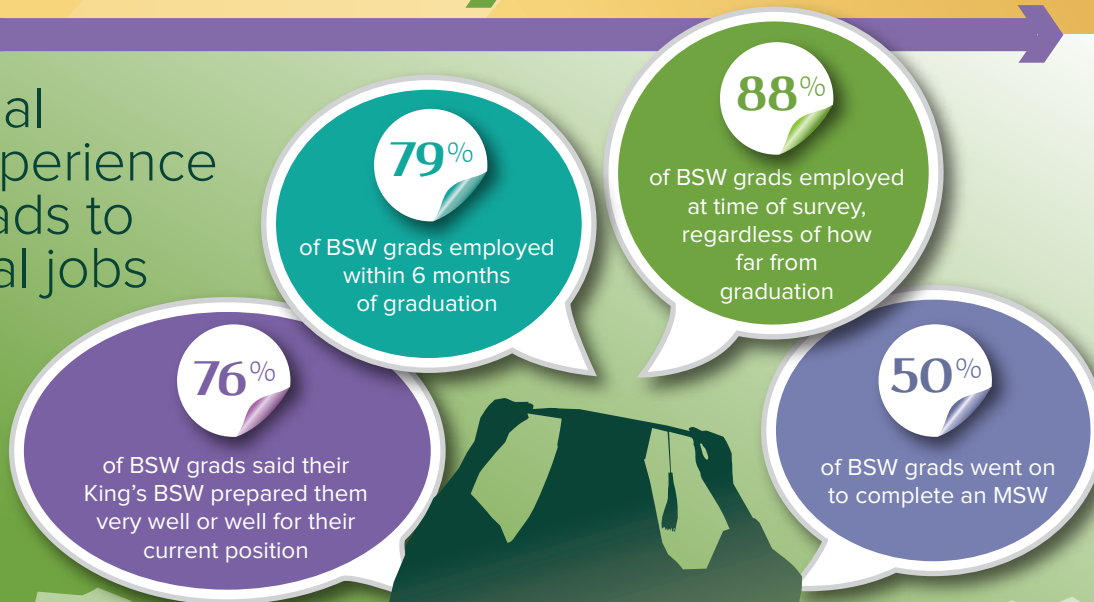
BSW Curriculum



Dedicated
to growth



Real
experience
leads to
real jobs



Visit our website: kings.uwo.ca/bsw



Western University • Canada

Bachelor of
Social Work

King's University College School of Social Work

King's School of Social Work is a wonderful place for learning: a place where you can push conceptual boundaries, explore new territory, and enhance your skills. Our small class sizes and the quality and commitment of our faculty to teaching will provide you with a warm and stimulating environment.

Preparation for professional practice in the dynamic and evolving profession of social work begins with the Bachelor of Social Work. Our program includes education for social work practice with individuals, families, groups and communities. The opportunity to develop practice skill is provided through direct experience in a variety of social service and health organizations under professional supervision.

Why Study Social Work at King's?

- › Fully accredited professional program
- › Full-time and Extended Study (part-time) available
- › Extensive and varied practicum experiences
- › Study at King's University College and receive a Western degree

Field Education



Practicum (experiential learning) is an integral component of our BSW program. Our students are placed in a variety of agencies and settings in London and the surrounding area. King's School of Social Work is connected to over 300 social service agencies and organizations where you will gain practical social work experience.



Students can expect:

- › Top-ranked faculty that are accessible to students inside and outside the classroom
- › Small interactive classes
- › Comprehensive student services
- › A strong sense of community

Academic Supports for Students

- › Dedicated academic advisor
- › Student Services
- › Write Place
- › Learning Skills

Financial Supports for Students

- › Scholarships – Entrance and Continuing
- › Bursaries
- › Work Study and First Generation Programs

CLASSES
AVERAGE BETWEEN
20 to 25
STUDENTS

Academic Pathways



The Bachelor of Social Work (Honors) program begins in third year. If you are entering first-year at King's, please see your academic advisor about choosing required courses. Students from colleges or other universities may also apply. Contact the School for information about transfer courses and pathways into upper years at King's and the BSW program.

Admission Requirements

The BSW (Honors) degree is a professional four-year honors degree. Students must be in second year or equivalent to be eligible to apply for admission to the professional program for third and fourth year.

Academic Requirements:

- › 10.0 courses including Social Work pre-program courses (see website for details).

Non-Academic Requirements:

- › Group Interview participation
- › Profile of work, volunteer and diversity experiences
- › References

Best of all worlds

Combine your BSW degree with subjects like:

- › Disability Studies
- › First Nations Studies
- › Social Justice and Peace
- › Childhood and Social Institutions
- › Thanatology

Continue your Social Work studies with an MSW from King's or another university.

A place to grow

Be prepared to learn a lot about yourself. You want to learn a lot about being a good social worker, you want to learn about theory and you want to learn about practice, but I think what you end up doing on top of that is learning a whole lot about who you are and where your values and beliefs lie.

— Joe Antone, BSW 2014, MSW 2015



DEDICATED TO GROWTH

Visit our website: kings.uwo.ca/bsw